

Walk-on Lid Detail

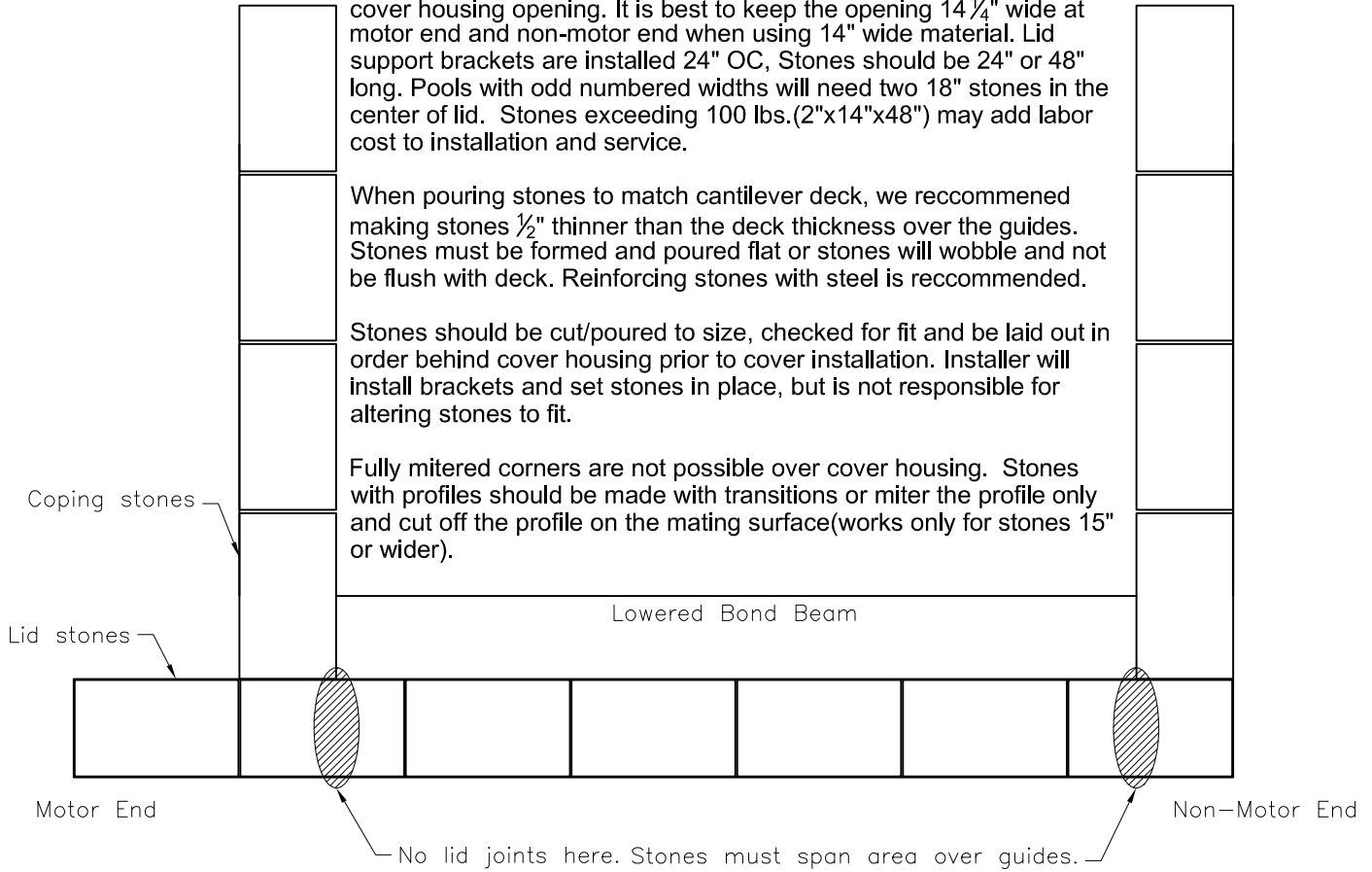
Deck must be level, straight and flat around the perimeter of the cover housing. Do not slope deck around motor end or lid stone will not sit flush.

Lid stones cannot be thicker than coping or deck over the guides. Stones should be at least 2" thick. Stones should be $\frac{1}{4}$ " narrower than cover housing opening. It is best to keep the opening $14\frac{1}{4}$ " wide at motor end and non-motor end when using 14" wide material. Lid support brackets are installed 24" OC, Stones should be 24" or 48" long. Pools with odd numbered widths will need two 18" stones in the center of lid. Stones exceeding 100 lbs. (2"x14"x48") may add labor cost to installation and service.

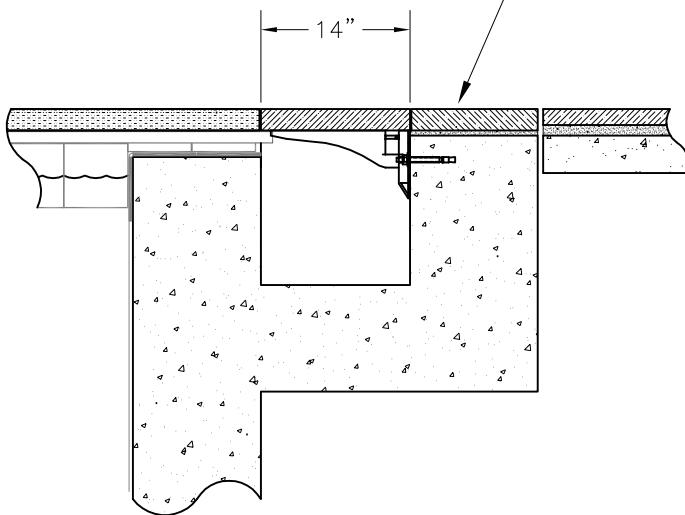
When pouring stones to match cantilever deck, we recommended making stones $\frac{1}{2}$ " thinner than the deck thickness over the guides. Stones must be formed and poured flat or stones will wobble and not be flush with deck. Reinforcing stones with steel is recommended.

Stones should be cut/poured to size, checked for fit and be laid out in order behind cover housing prior to cover installation. Installer will install brackets and set stones in place, but is not responsible for altering stones to fit.

Fully mitered corners are not possible over cover housing. Stones with profiles should be made with transitions or miter the profile only and cut off the profile on the mating surface (works only for stones 15" or wider).



Stone width is typically the same as the housing width



If using stones wider than housing, finish deck short and support back of stone with mortar

